

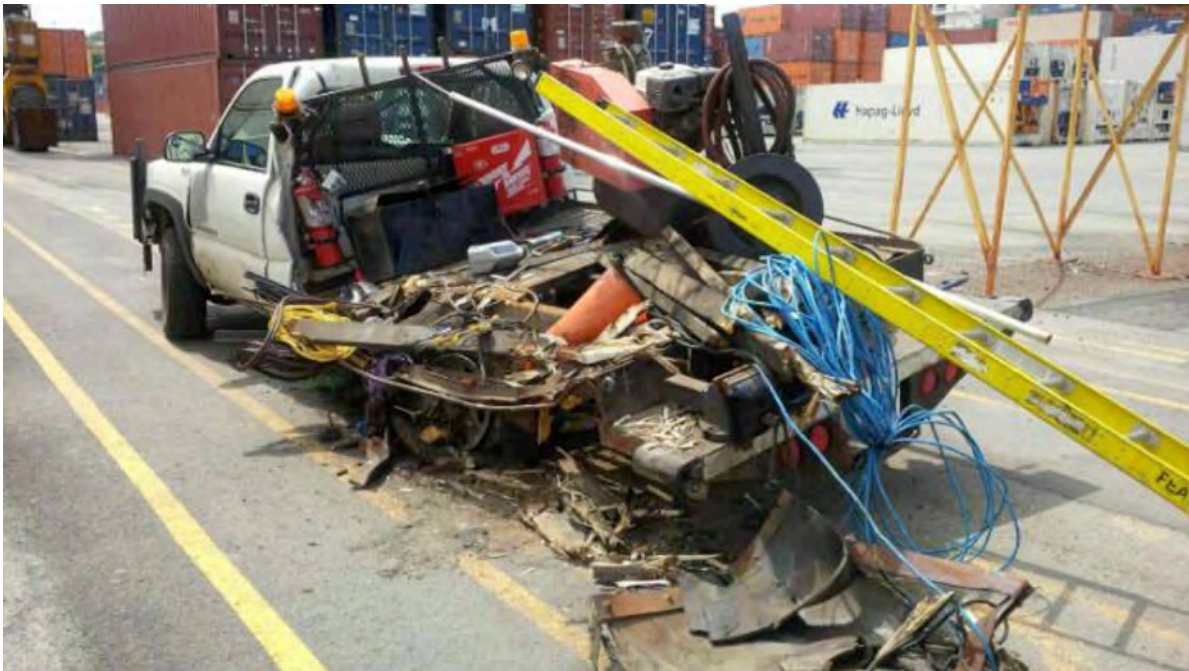


ILA-UMX JOINT SAFETY COMMITTEE

OSH Circular 2015-08 (04 August 2015)

Terminal Pickup Truck Demolished By Rubber-Tired Gantry Crane

No Injuries, But The Possibilities Were Endless!



Yesterday, at Halifax, Nova Scotia, someone apparently wasn't thinking too clearly when they parked their pickup truck too close to an RTG runway. The results are obvious..... and were completely avoidable. Making matters worse, the pickup was parked near a runway that happened to be on the RTG operator's blind side!

In a global sense, longshore worker lives have been lost in similar accidents.

Terminals should have a clear policy that prohibits parking on or near RTG runways. Runway marking should be present and should indicate any prohibitions (some terminals fence their runways). Employees should be trained in relation to those prohibitive policies, and such policies should be enforced uniformly, all day; every day.

We should each do our part in preserving our lives and our industry. Are you doing yours?

Working Together For The Benefit Of All

ILA-UMX OSH Circulars are devised to reflect the best possible information and guidance, and are products of diligent research and the most up to date subject matter knowledge. Consequently, while the information contained herein is believed to be accurate, owing to a host of factors ILA-UMX can convey no direct or implied warranty relative to the reliance of parties upon content.